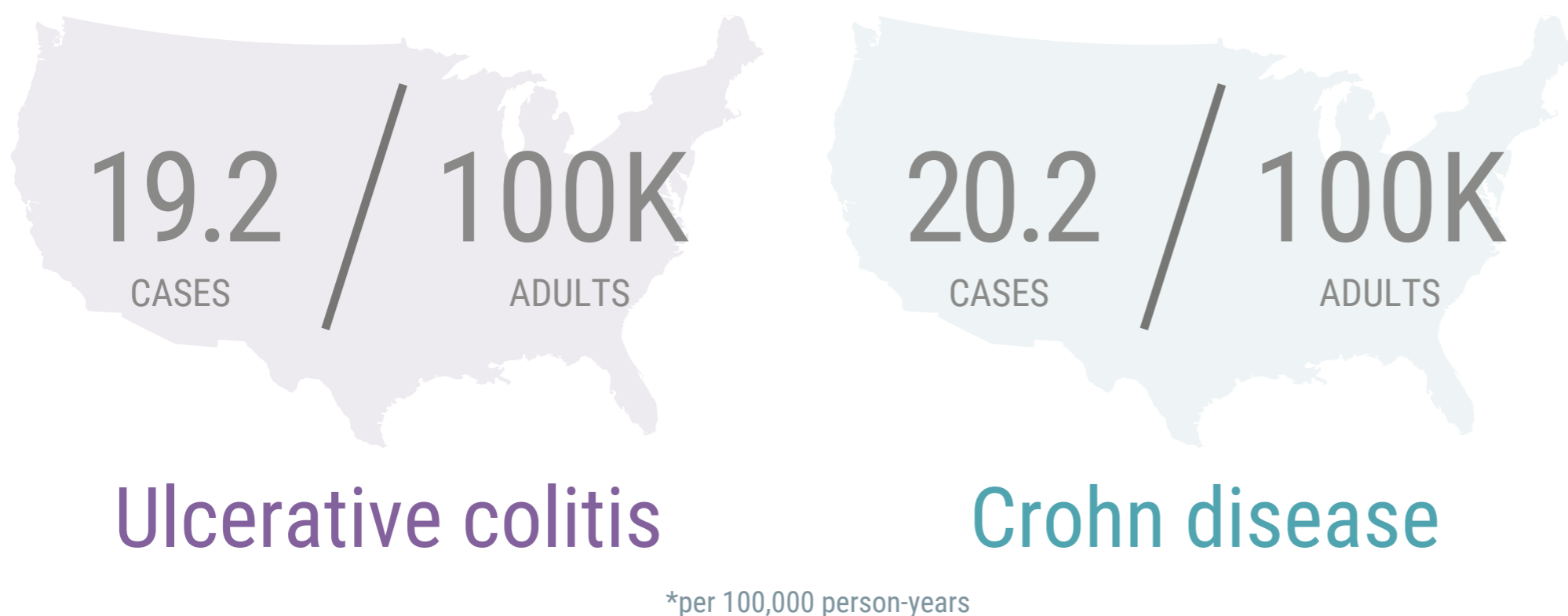


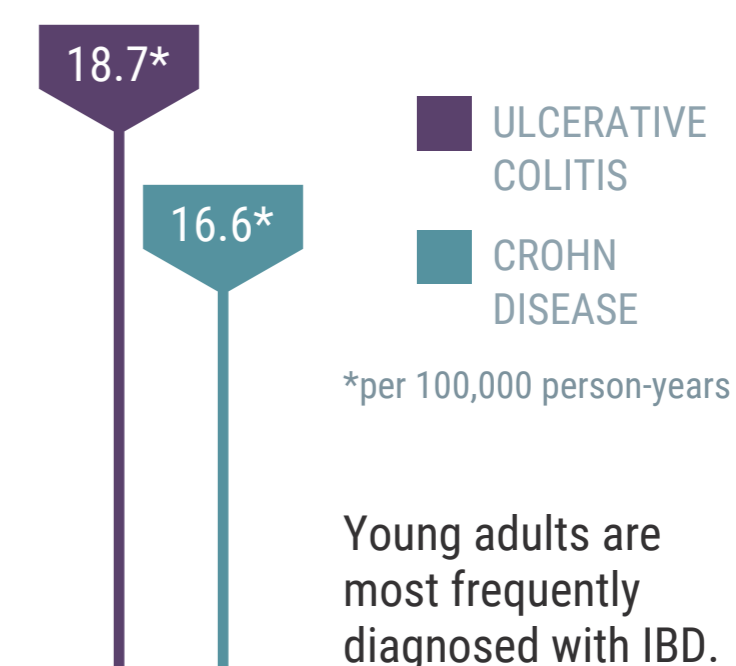
Inflammatory Bowel Disease

IBD Incidence* Rates in North America



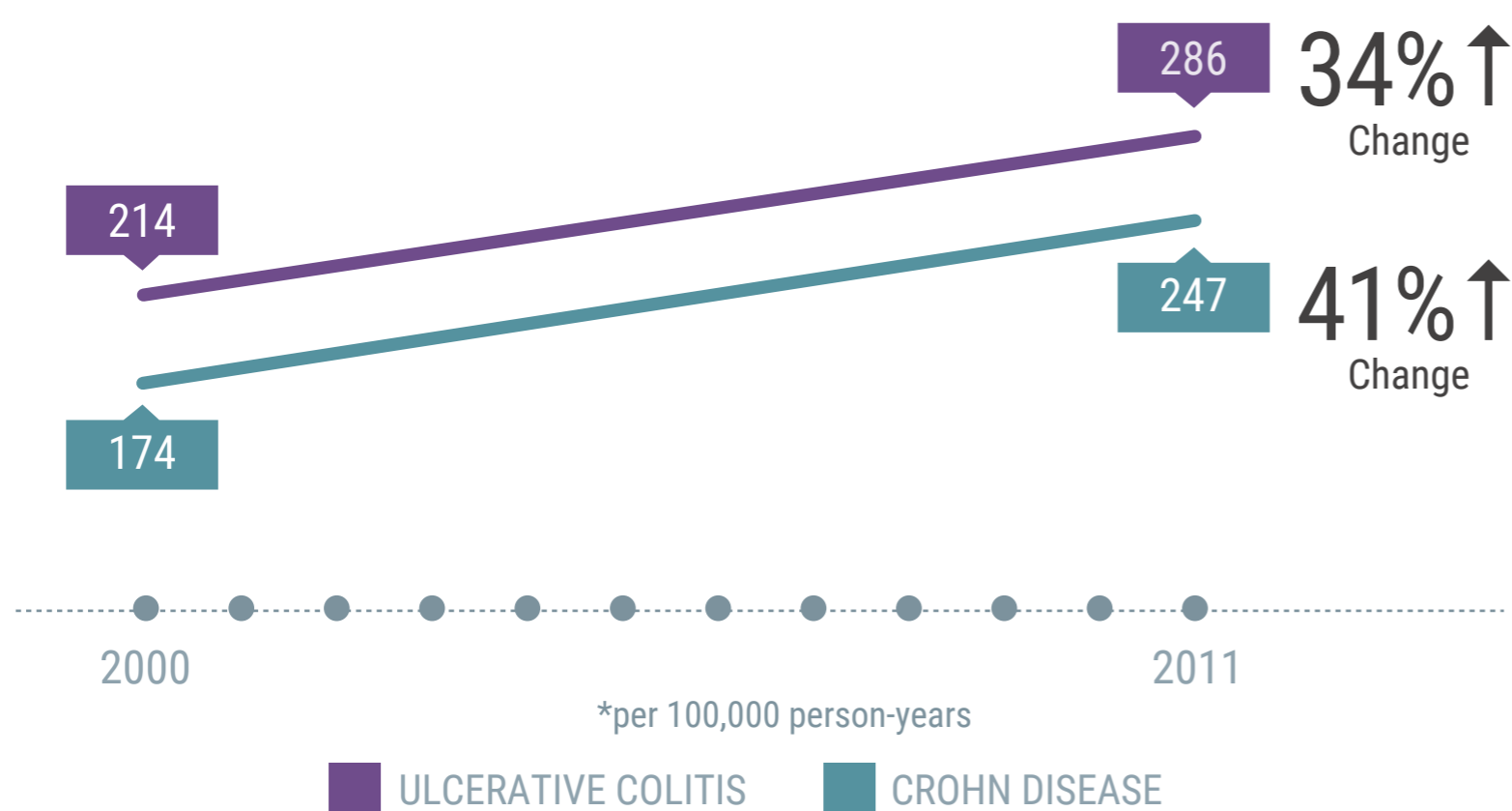
Source: Molodecky NA, et al. Increasing incidence and prevalence of the inflammatory bowel diseases with time, based on systematic review. *Gastroenterology*. 2012;142:46-54.e42.

Incidence Rates of IBD Among 20- to 29-Year-Olds



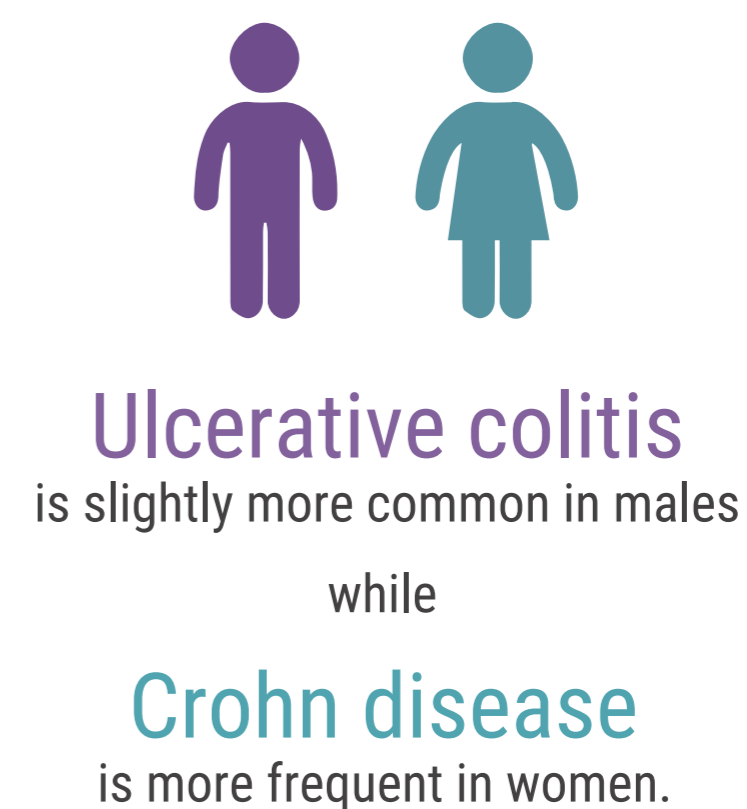
Source: Shivashankar R, et al. Incidence and prevalence of Crohn's disease and ulcerative colitis in Olmsted County, Minnesota from 1970 through 2010. *Clin Gastroenterol Hepatol*. 2017;15:857-863.

Prevalence* of IBD Cases From 2000 to 2011



Source: Shivashankar R, et al. Incidence and prevalence of Crohn's disease and ulcerative colitis in Olmsted County, Minnesota from 1970 through 2010. *Clin Gastroenterol Hepatol*. 2017;15:857-863.

Sex Affects Disease



Source: CDC. Epidemiology of the IBD. March 31, 2015. <https://www.cdc.gov/ibd/ibd-epidemiology.htm> Accessed December 11, 2017.