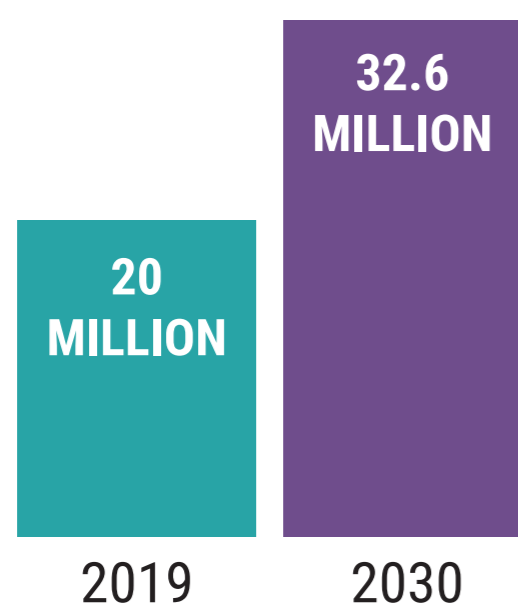


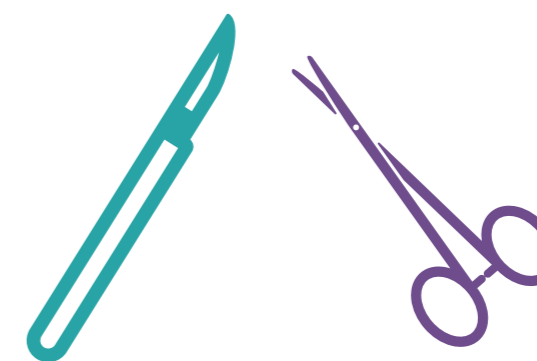
Nonalcoholic Steatohepatitis (NASH): A Growing Epidemic

Prevalence on the Rise Worldwide



Approximately
20 MILLION PEOPLE
in the US currently have NASH

By 2030, prevalence is expected to increase by **63%**



NASH is expected to become the leading cause of liver transplantation by 2020

Source: Estes C. et al. Modeling the epidemic of nonalcoholic fatty liver disease demonstrates an exponential increase in burden of disease. *Hepatology*. 2018;67:123-133.

Obesity and NASH

OBESITY IS A MAJOR RISK FACTOR
for developing NASH

Percentage of US adult population with obesity in **2014**

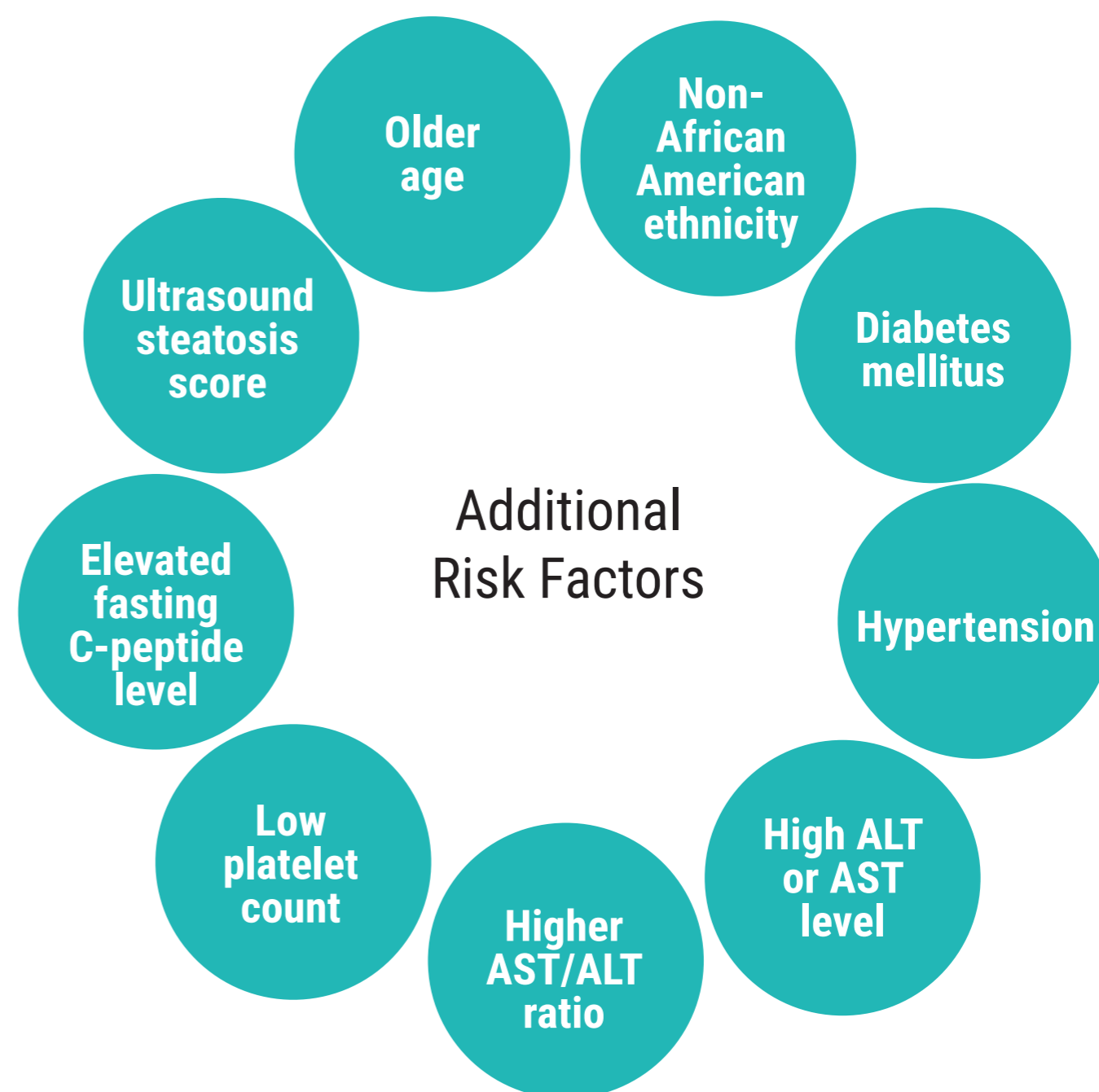


Projected percentage in **2030**



This represents a
25% INCREASE
in obesity by 2030

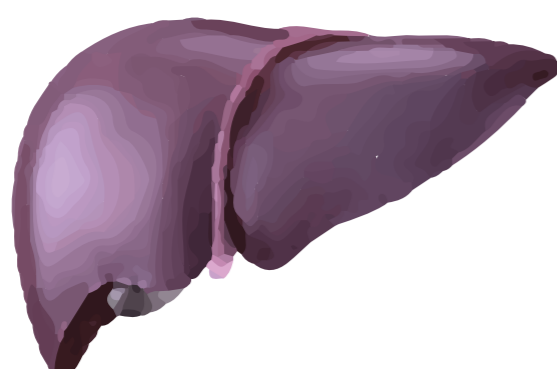
Source: The NASH Education Program, 2019.



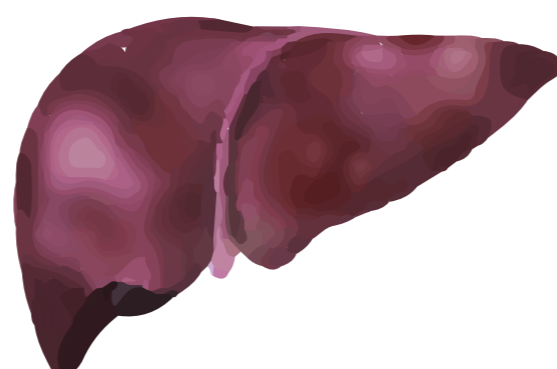
Source: Perumpail BJ, et al. Clinical epidemiology and disease burden of nonalcoholic fatty liver disease. *World J Gastroenterol*. 2017;23:8263-8276.

Progression to Cirrhosis

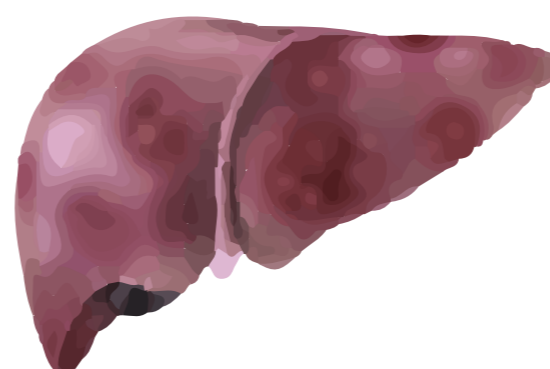
21% TO 26% of patients with NASH progress to cirrhosis in an 8-year period



HEALTHY LIVER



FAT ACCUMULATION



NASH



CIRRHOSIS

Source: Perumpail BJ, et al. Clinical epidemiology and disease burden of nonalcoholic fatty liver disease. *World J Gastroenterol*. 2017;23:8263-8276.