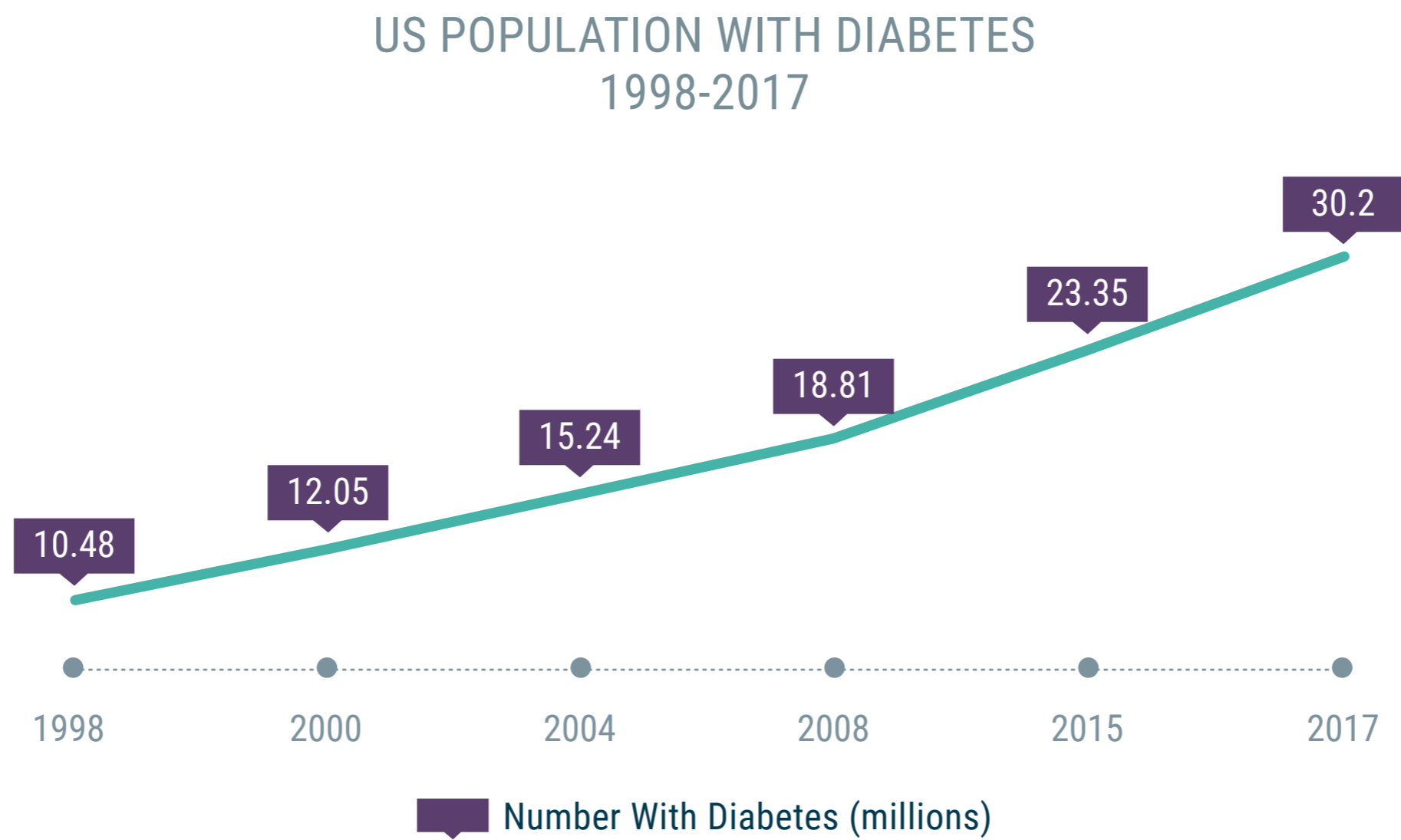


Type 2 Diabetes

Diabetes in the US: A Rising Epidemic



Source: Centers for Disease Control and Prevention, 2017; International Diabetes Federation, 2017.

CAUSES OF INCREASE



Aging population



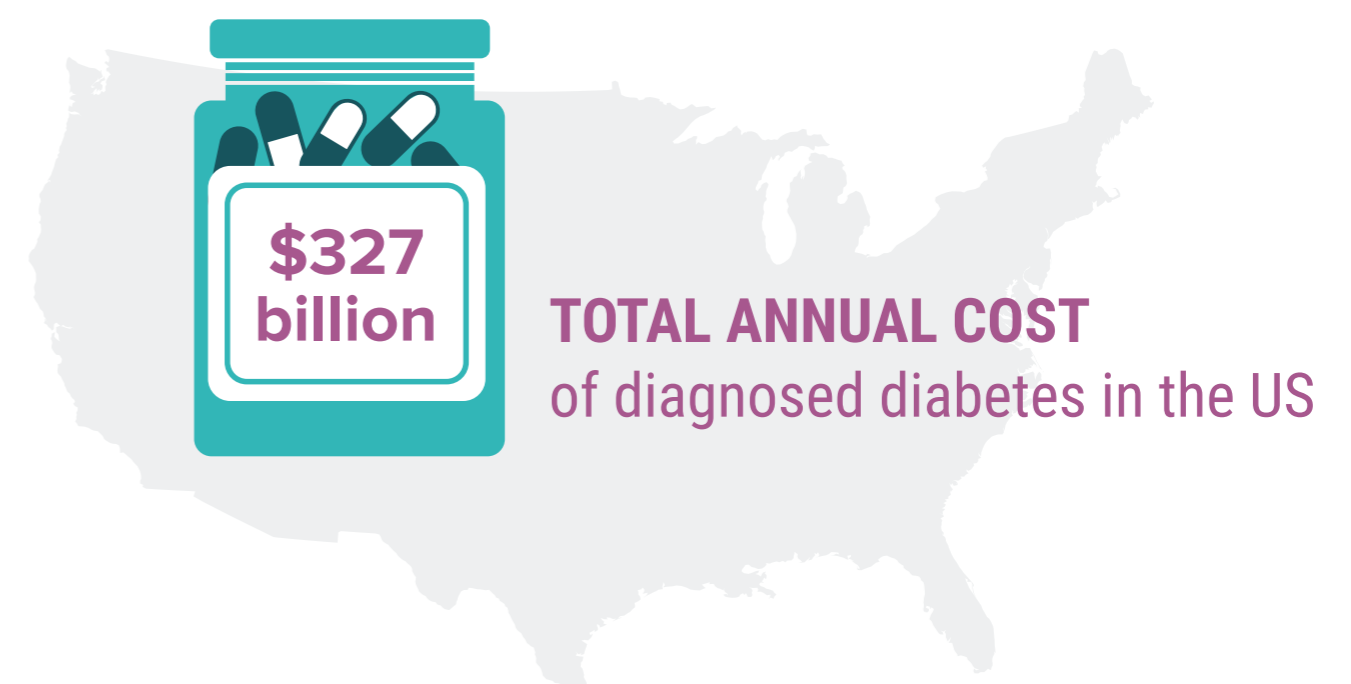
Sedentary lifestyle
(Obesity, lack of physical activity, poor diet)



Living in urban areas

Source: International Diabetes Federation, 2017.

COST BURDEN OF DIABETES



Source: Economic Costs of Diabetes in the U.S. in 2017. American Diabetes Association statement. *Diabetes Care*. 2018.

Diabetes Prevalence in Seniors

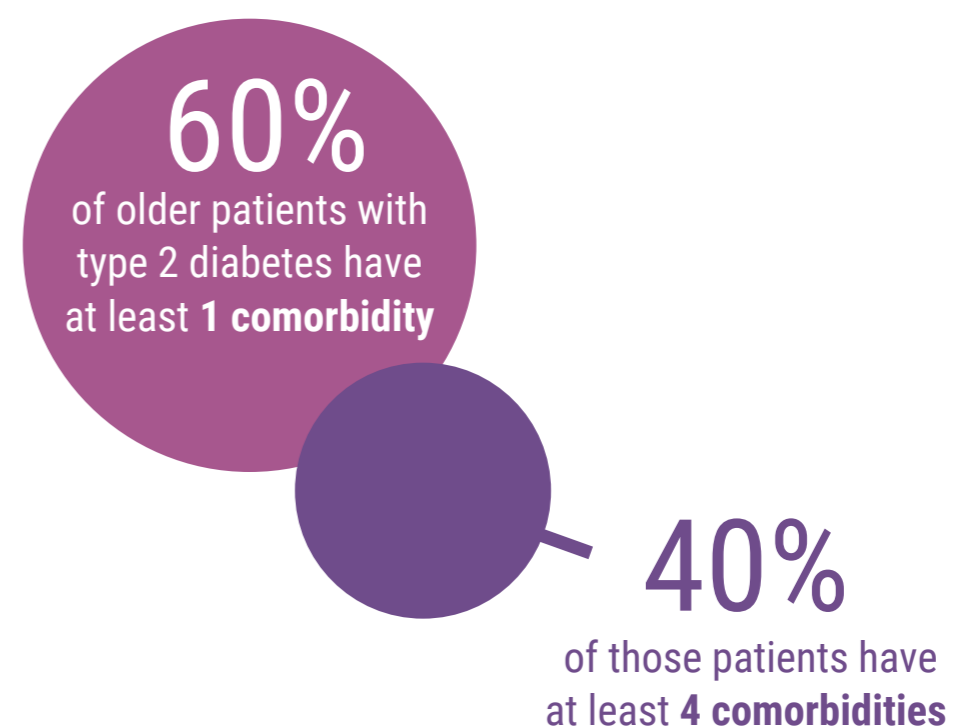


1 in 4

Americans aged 65 and older are diabetic

Source: American Diabetes Association, 2018.

Comorbidities in Older Patients



Common Comorbidities

- Cognitive dysfunction
- Disability
- Depression
- Polypharmacy
- Hearing and vision impairment
- Falls and fractures

Source: Kotsani M, et al. Higher prevalence and earlier appearance of geriatric phenotypes in old adults with type 2 diabetes mellitus. *Diabetes Res Clin Pract*. 2018;135:206–217.